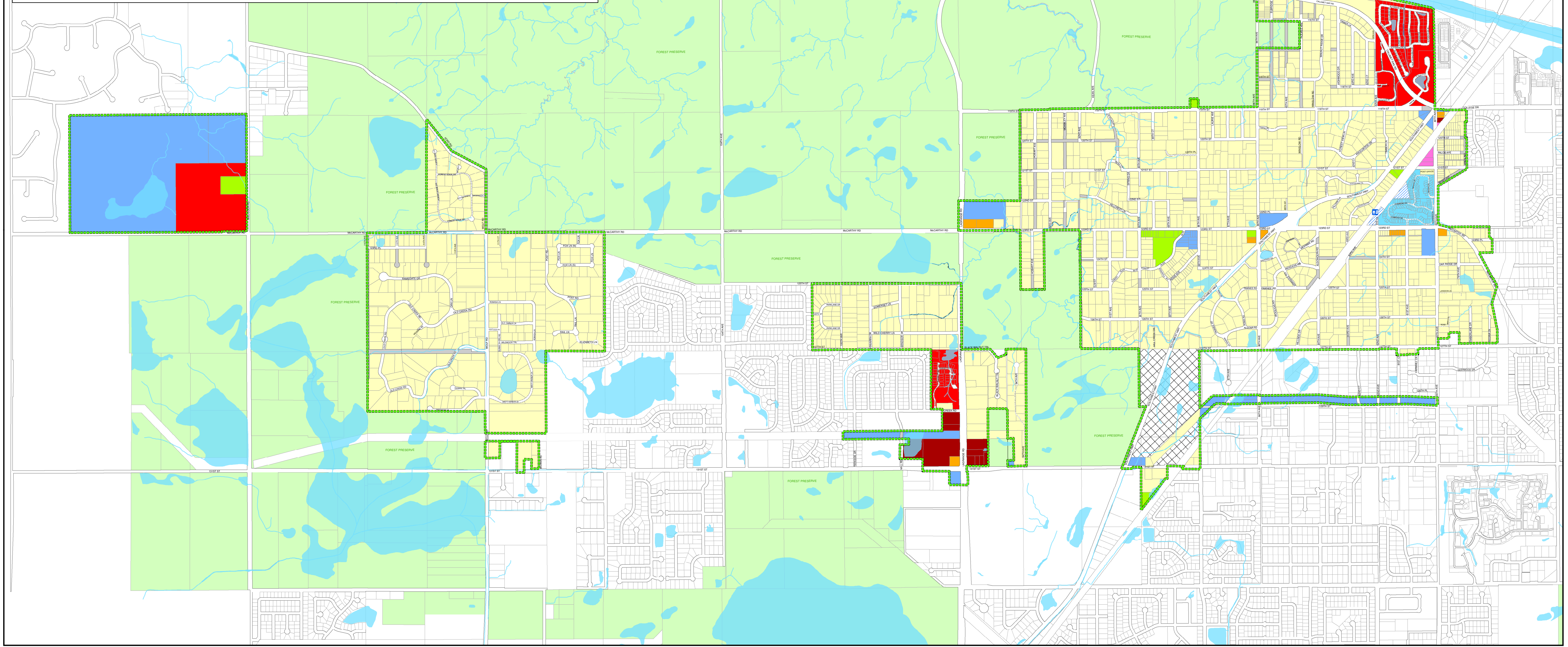


THE VILLAGE OF PALOS PARK, ILLINOIS BOUNDARY AND ZONING MAP

MARCH 2009

Source: Cook County, Illinois
1998 Hydrography Polygons
1 inch = 1,000 feet



Legend

- | | | | | | |
|--|--|--|---|--|---|
| | R-1-A ONE FAMILY DWELLING DISTRICT | | B-1 BUSINESS DISTRICT | | EXISTING METRA STATIONS |
| | R-1-A SPECIAL USE | | B-2 BUSINESS DISTRICT | | PRIVATE ROAD |
| | R-1-A SPECIAL USE (FARMING) | | M-1 MANUFACTURING DISTRICT LIMITED | | UNIMPROVED DEDICATED OR VACATED STREETS |
| | R-1-A SPECIAL USE FOR PUBLIC TRANSPORTATION ETC. (METRA STATION AND PARKING) | | FOREST PRESERVE DISTRICT OF COOK COUNTY | | VILLAGE LIMITS |
| | R-1-A PUBLIC LANDS | | | | |
| | R-4 UNIFIED RESIDENTIAL DISTRICT | | | | |
| | R-5 SPECIAL DEVELOPMENT DISTRICT | | | | |

REVISED	BY
03-20-09	FAB
03-23-09	FAB
03-18-09	JAC